

WOMEN'S CONFERENCE

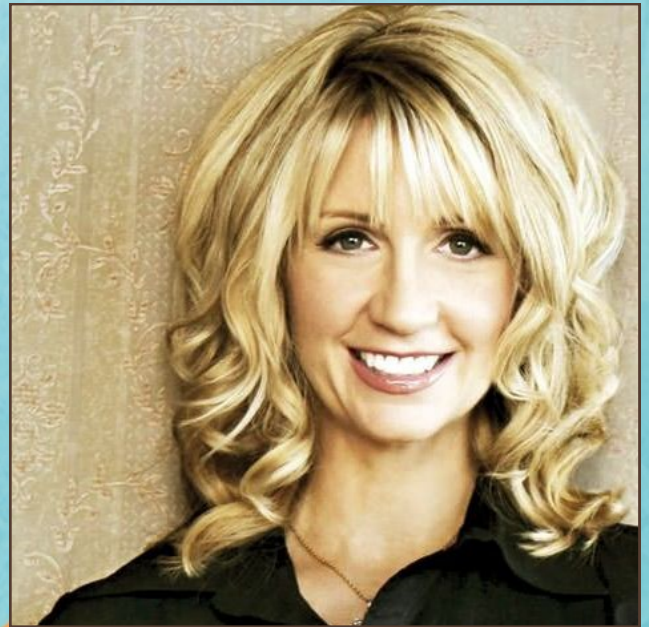
# *Living Hope*

WITH *Angela Thomas*

FRI SAT  
OCTOBER 23/24

PRAISE & WORSHIP LED BY:

*Jenni Samuelson*



*Tickets for both days:*

\$30 until August 31

\$40 starting Sept. 1

*Register at:*

[www.cpcmerced.org](http://www.cpcmerced.org)

CENTRAL PRESBYTERIAN CHURCH 1920 CANAL STREET, MERCED † 723-0491